

ॐ
ॐ
ॐ
ॐ

Satyamev
ELITE

HERE, **BRIDGE**

CONNECTS YOU TO
A NEW IDENTITY



THE ETHOS OF BUSINESS IS TO CREATE A FIRM

FOUNDATION FOR SUCCESS.

WHEN YOUR ADDRESS IS AS INVITING AS YOUR

VENTURE, YOU KNOW YOU HAVE STEPPED A

PACE FORWARD TOWARDS

ACCOMPLISHMENTS. BE READY TO WELCOME

SUCCESS AS THE DOORS ARE NOW OPEN.....

CORPORATE SPACES



Satyamev
ELITE



RETAIL SPACES





Satyamev **ELITE**

THE FACADE OF SUCCESS IS ALWAYS ENIGMATIC AS
REFLECTED BY THAT OF SATYAM ELITE. TAKE YOUR KEY
AND OPEN UP AVENUES THAT REDEFINE THE WAY
ACHIEVEMENTS ARE DONE WITH THOUGHTFUL DESIGNS,
ERGONOMIC SPACING, ATTRACTIVE APPEARANCE AND
BANG ON LOCATION. FIND ALL THE INGREDIENTS OF
SUCCESS AT ONE PLACE THAT IS SATYAM ELITE.

ABOUT LOCATION

SATYAM ELITE IS LOCATED ON THE MOST SOUGHT AFTER

LOCATION AT THE BUSTLING S.P. RING ROAD, BOPAL

JUNCTION AND WELL CONNECTED TO ALL THE PRIME AREAS

OF THE CITY. SITUATED AT A VERY CONVENIENT DISTANCE

FROM KARNAVATI CLUB, THALCEJ, SINDHU BHAVAN ROAD,

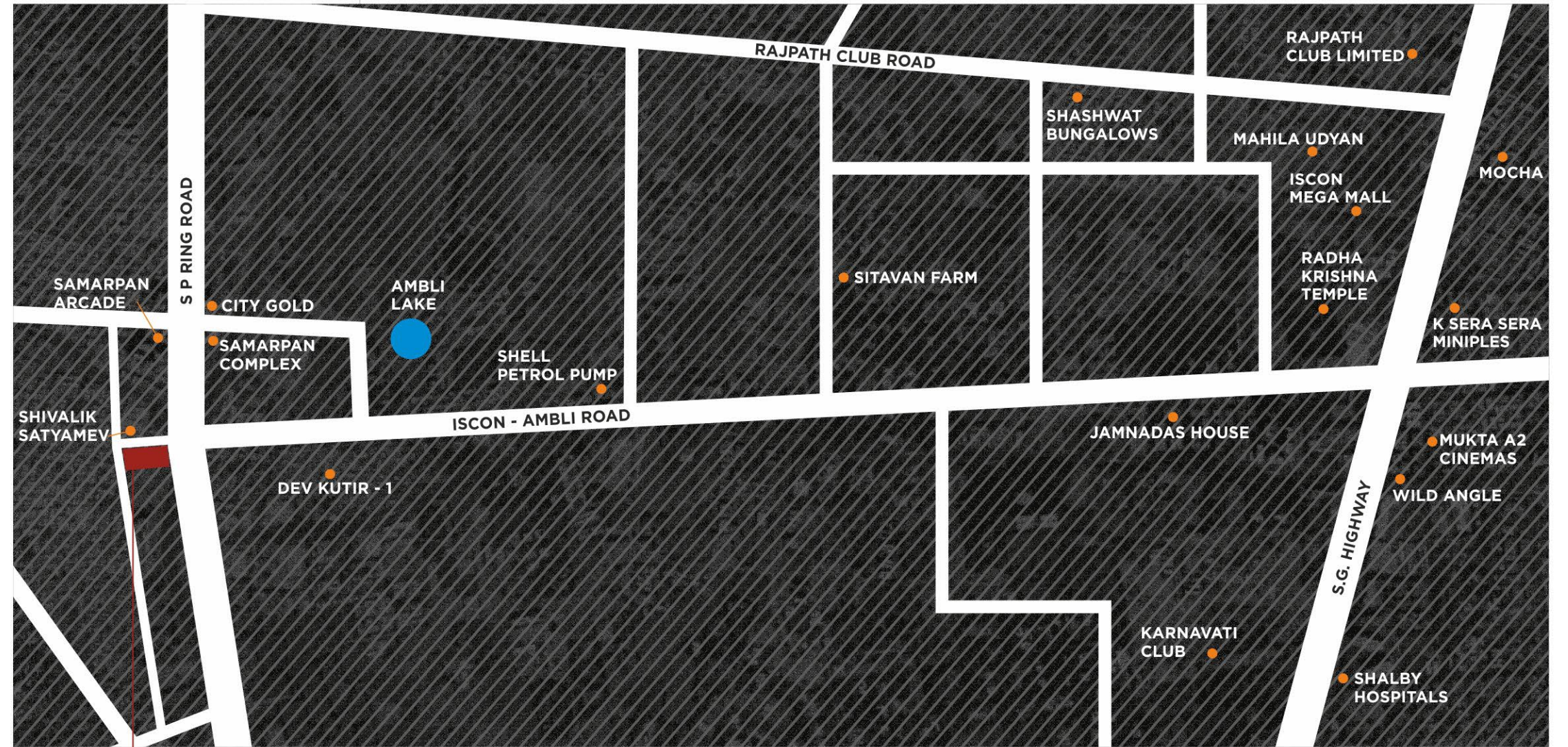
AMBLI ROAD AND SOUTH BOPAL, YOU WILL FOUND YOURSELF

IN THE CENTRE OF ALL THE HAPPENING HOTSPOTS. GIVE YOUR

BUSINESS THE LIMELIGHT IT DESERVES!

Satyamev
ELITE

S.P. RING ROAD, BOPAL JUNCTION, AHMEDABAD.





AMENITIES :

ADDITIONAL FEATURE THAT ENHANCE THE

DESIRABILITY AND OFTEN THE

APPRAISAL VALUE OF A PROPERTY.



ENTICING LOBBY



MULTI LEVEL PARKING



24 HR SECURITY WITH
CCTV SURVEILLANCE SYSTEM

Satyamev
ELITE

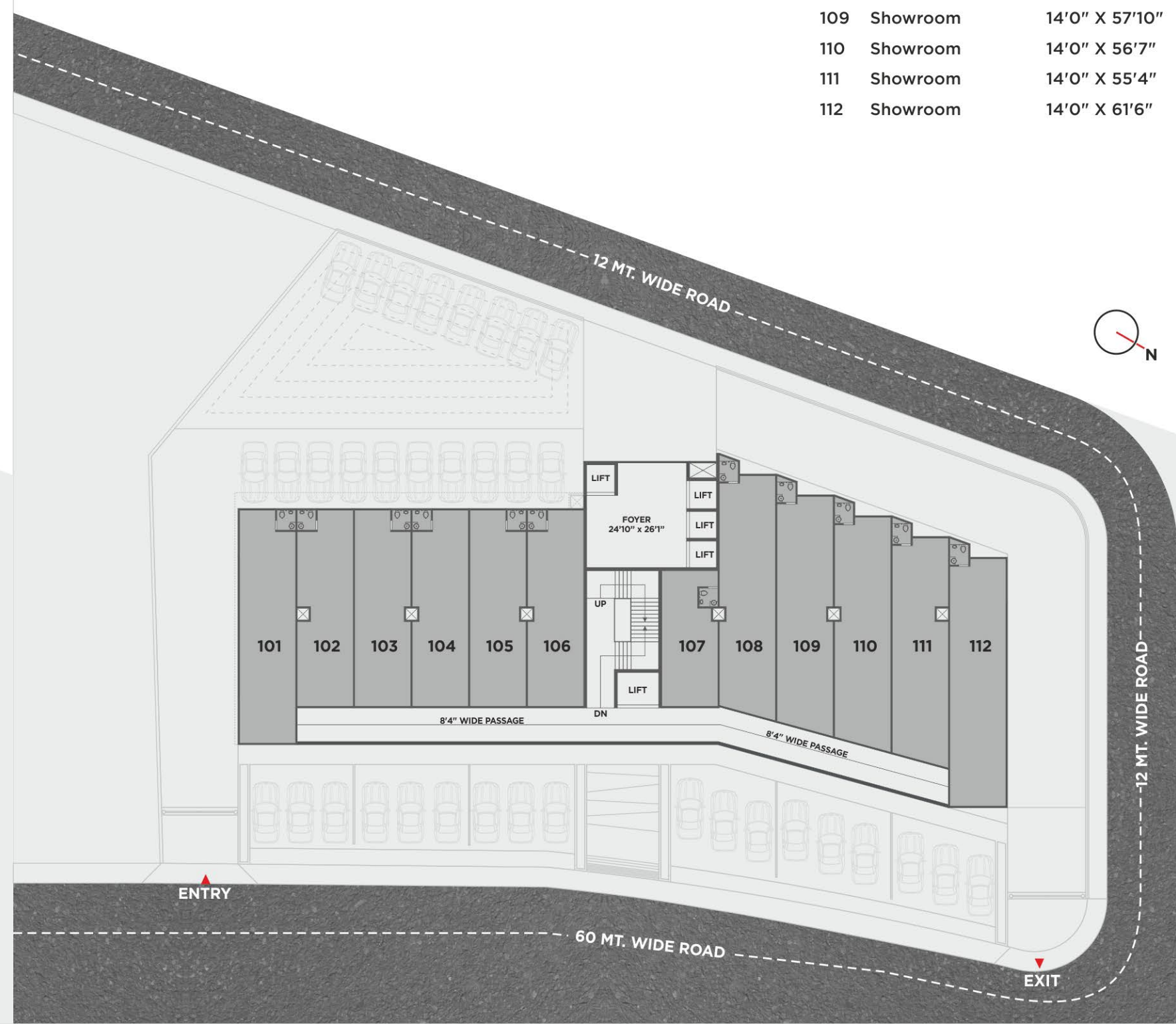
GROUND FLOOR

01 to 06	showroom	14'0" x 58'0"
07	showroom	14'0" x 42'11"
08	showroom	14'0" x 68'7"
09	showroom	14'0" x 67'3"
10	showroom	14'0" x 66'0"
11	showroom	14'0" x 64'9"
12	showroom	14'0" x 61'6"



1ST & 2ND FLOOR PLAN

101	Showroom	14'0" X 58'0"
102 to 106	Showroom	14'0" X 48'10"
107	Showroom	14'0" X 33'9"
108	Showroom	14'0" X 59'1"
109	Showroom	14'0" X 57'10"
110	Showroom	14'0" X 56'7"
111	Showroom	14'0" X 55'4"
112	Showroom	14'0" X 61'6"

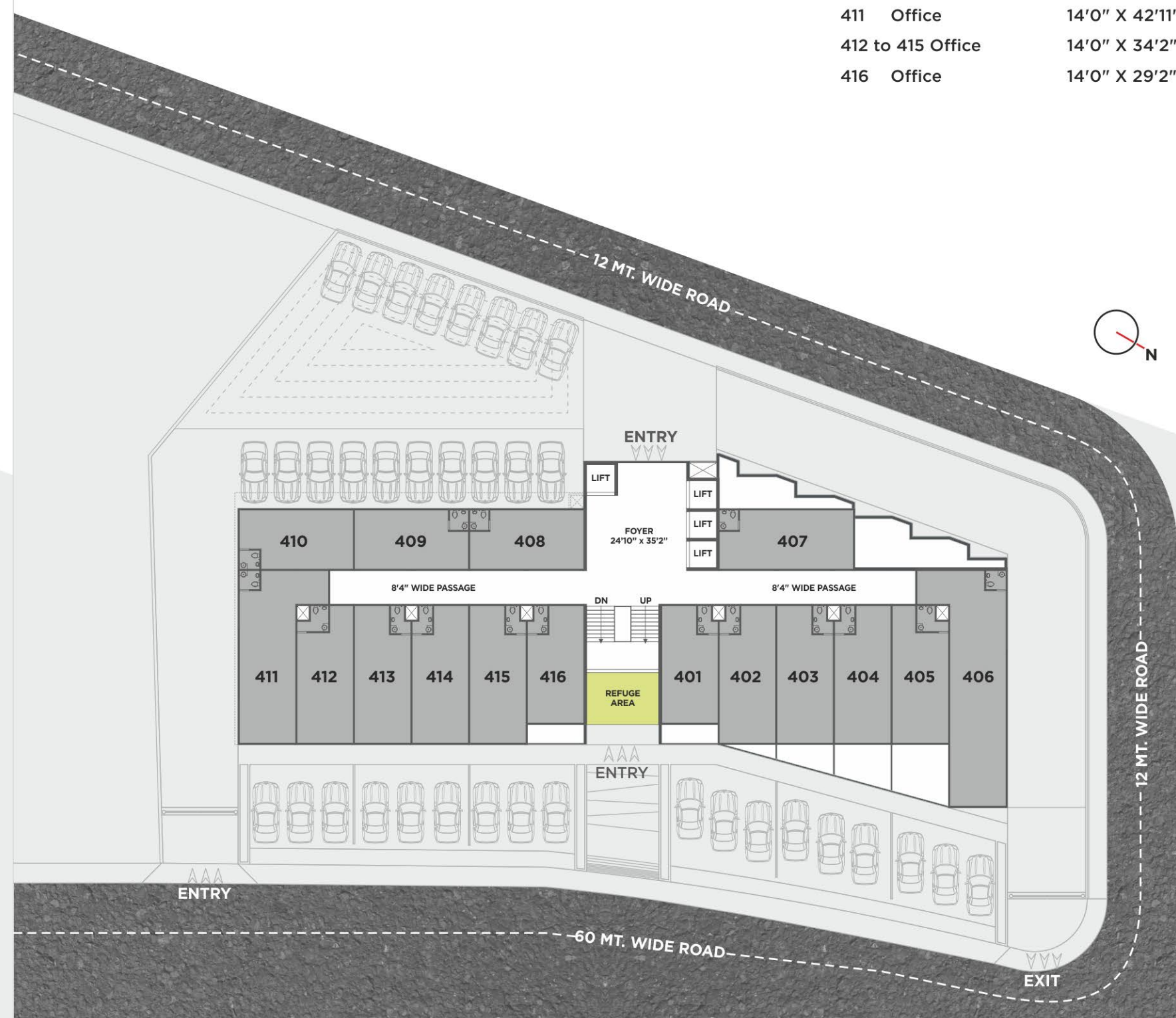
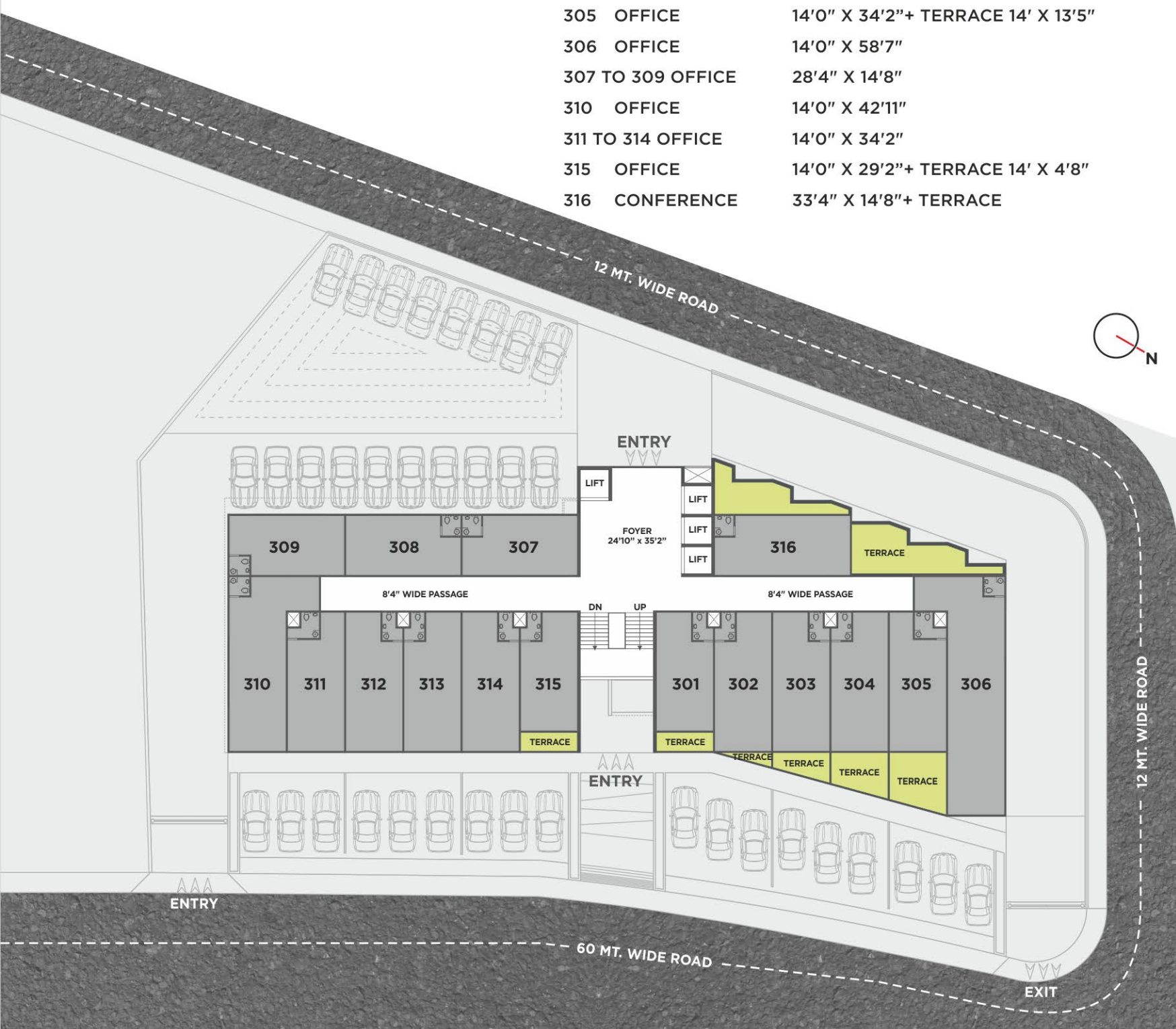


3RD FLOOR PLAN

301	OFFICE	14'0" X 29'2" + TERRACE 14' X 4'8"
302	OFFICE	14'0" X 34'2" + TERRACE 13' X 1'9"
303	OFFICE	14'0" X 34'2" + TERRACE 14' X 5'6"
304	OFFICE	14'0" X 34'2" + TERRACE 14' X 9'5"
305	OFFICE	14'0" X 34'2" + TERRACE 14' X 13'5"
306	OFFICE	14'0" X 58'7"
307 TO 309	OFFICE	28'4" X 14'8"
310	OFFICE	14'0" X 42'11"
311 TO 314	OFFICE	14'0" X 34'2"
315	OFFICE	14'0" X 29'2" + TERRACE 14' X 4'8"
316	CONFERENCE	33'4" X 14'8" + TERRACE

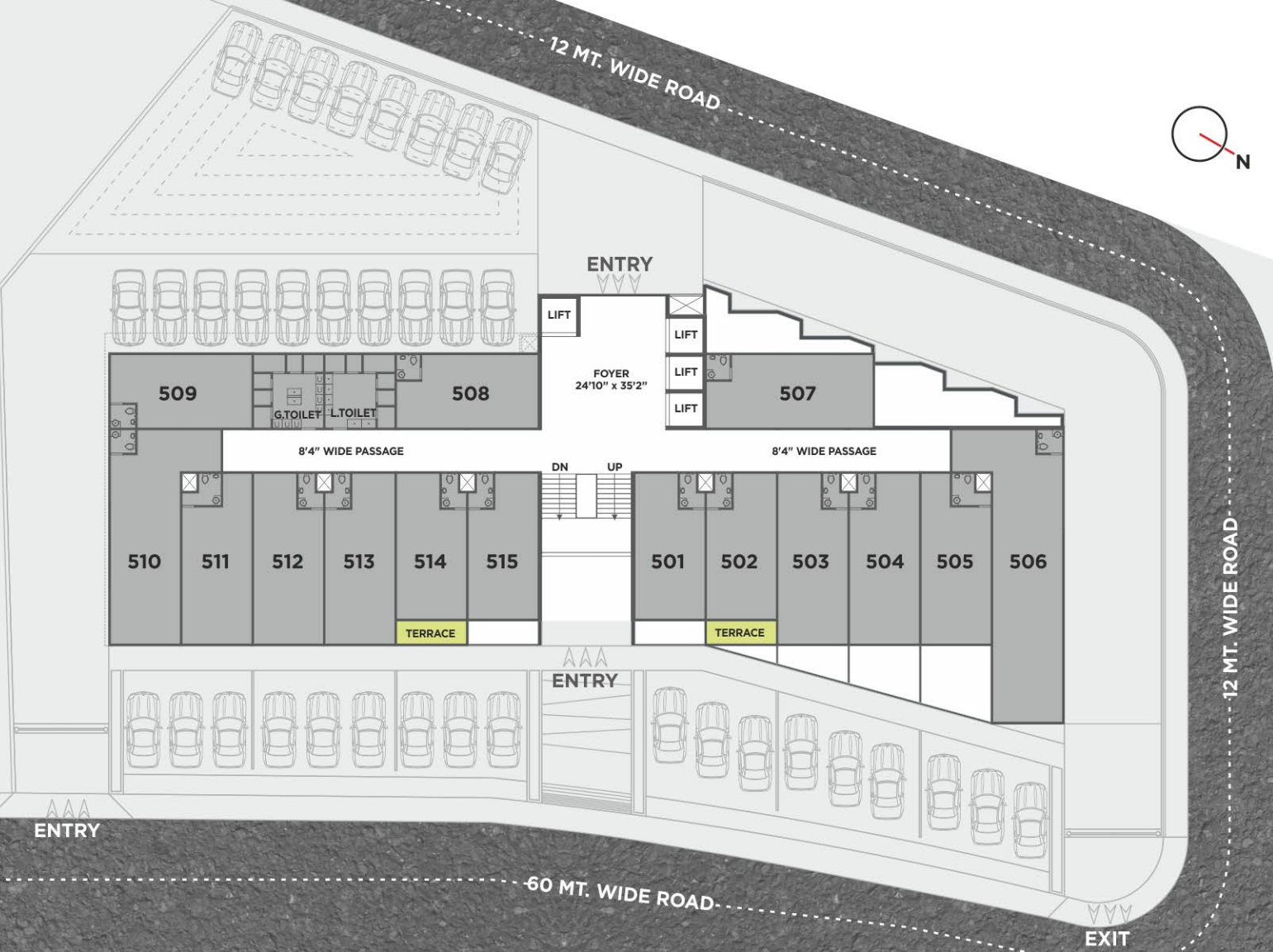
4TH FLOOR PLAN

401	Office	14'0" X 29'2"
402 to 405	Office	14'0" X 34'2"
406	Office	14'0" X 58'7"
407 to 410	Office	33'4" X 14'8"
411	Office	14'0" X 42'11"
412 to 415	Office	14'0" X 34'2"
416	Office	14'0" X 29'2"



5TH FLOOR PLAN

- 501 OFFICE 14'0" X 29'2"
- 502 OFFICE 14'0" X 29'2"+ TERRACE 14' X 4'8"
- 503 TO 505 OFFICE 14'0" X 34'2"
- 506 OFFICE 14'0" X 58'7"
- 507 TO 509 OFFICE 33'4" X 14'8"
- 510 OFFICE 14'0" X 42'11"
- 511 TO 513 OFFICE 14'0" X 34'2"
- 514 OFFICE 14'0" X 29'2"+ TERRACE 14' X 4'8"
- 515 OFFICE 14'0" X 29'2"



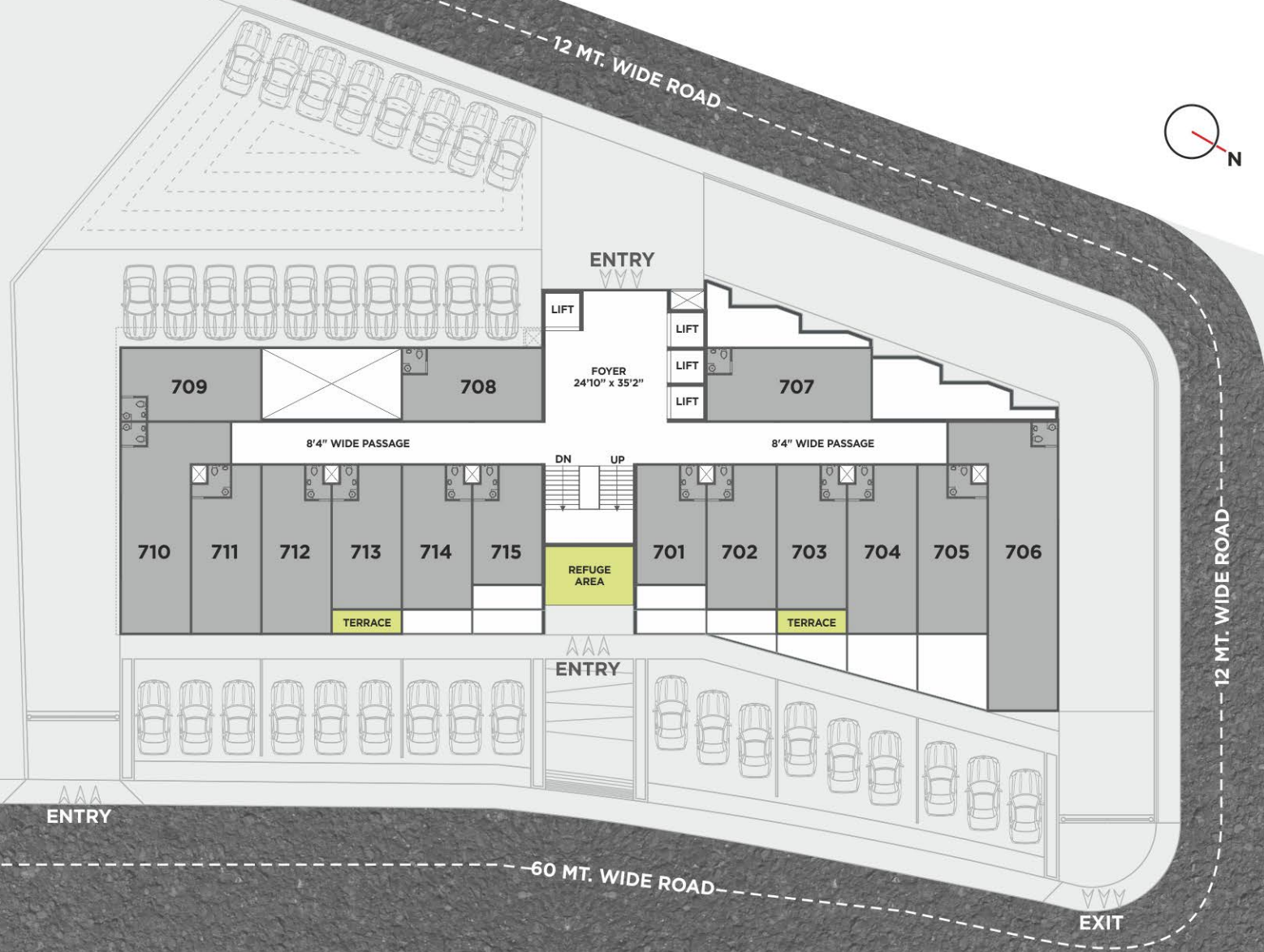
6TH FLOOR PLAN

- 601 Office 14'0" X 24'2"+ Terrace
- 602 Office 14'0" X 29'2"
- 603 TO 605 Office 14'0" X 34'2"
- 606 Office 14'0" X 58'7"
- 607 Office 33'4" X 14'8"
- 608 TO 610 Office 14'0" X 42'11"
- 611 TO 613 Office 14'0" X 34'2"
- 614 Office 14'0" X 29'2"
- 615 Office 14'0" X 24'2"+ Terrace



7TH FLOOR PLAN

701	Office	14'0" X 24'2"
702	Office	14'0" X 29'2"
703	Office	14'0" X 29'2"+ Terrace 14' X 4'8"
704 & 705	Office	14'0" X 34'2"
706	Office	14'0" X 58'7"
707 to 709	Office	33'4" X 14'8"
710	Office	14'0" X 42'11"
711 & 712	Office	14'0" X 34'2"
713	Office	14'0" X 29'2"+ Terrace 14' X 4'8"
714	Office	14'0" X 29'2"
715	Office	14'0" X 24'2"



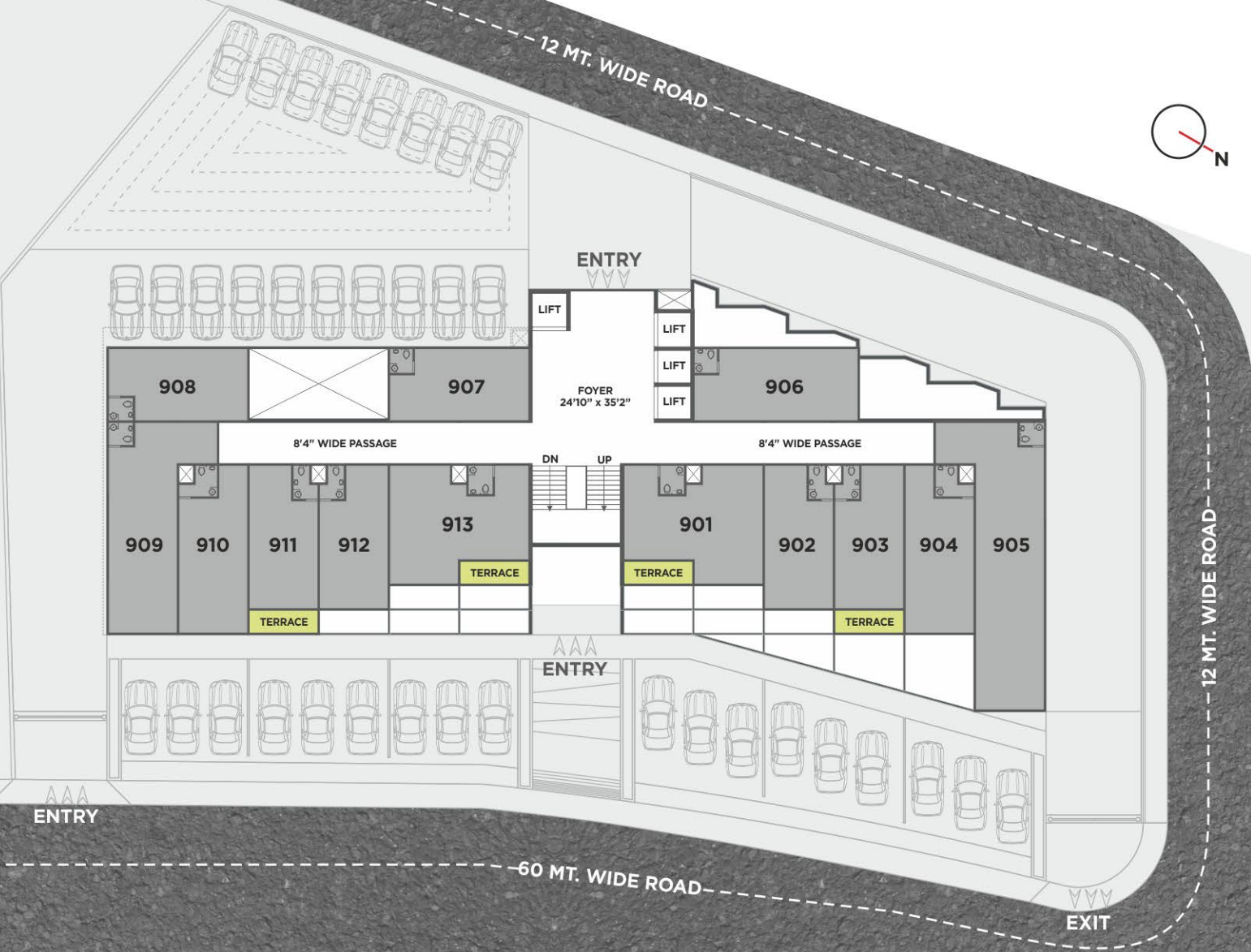
8TH FLOOR PLAN

801	Office	14'0" X 24'2"
802	Office	14'0" X 24'2"+ Terrace 14' X 4'8"
803	Office	14'0" X 29'2"
804 & 805	Office	14'0" X 34'2"
806	Office	14'0" X 58'7"
807 to 809	Office	33'4" X 14'8"
810	Office	14'0" X 42'11"
811 & 812	Office	14'0" X 34'2"
813	Office	14'0" X 29'2"
814	Office	14'0" X 24'2"+ Terrace 14' X 4'8"
815	Office	14'0" X 24'2"



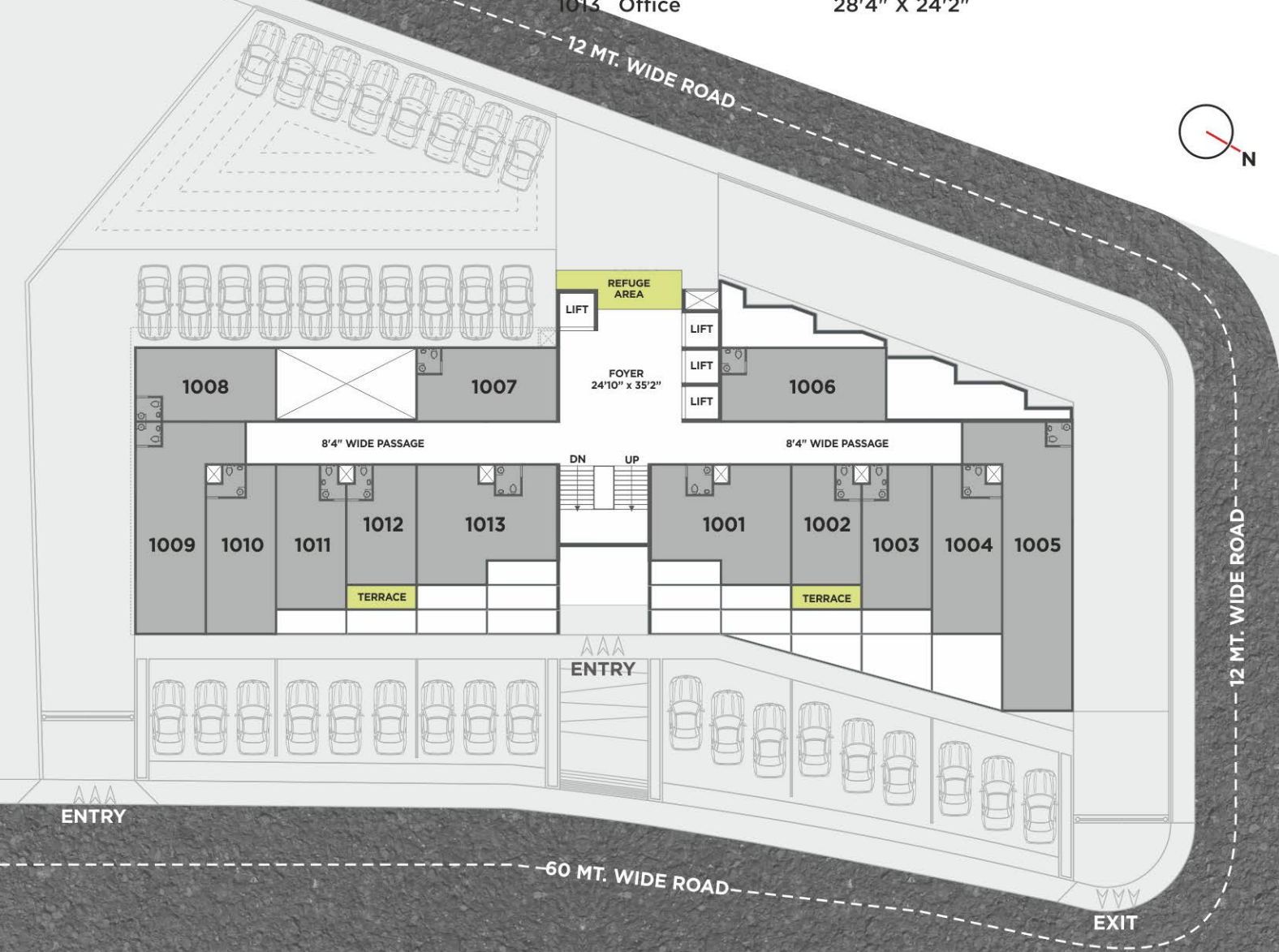
9TH FLOOR PLAN

- 901 Office 28'4" X 24'2"+ Terrace
- 902 Office 14'0" X 29'2"
- 903 Office 14'0" X 29'2"+ Terrace
- 904 Office 14'0" X 34'2"
- 905 Office 14'0" X 58'7"
- 906 Office 33'4" X 14'8"
- 907 & 908 Office 28'4" X 14'8"
- 909 Office 14'0" X 42'11"
- 910 Office 14'0" X 34'2"
- 911 Office 14'0" X 29'2"+ Terrace
- 912 Office 14'0" X 29'2"
- 913 Office 28'4" X 24'2"+ Terrace



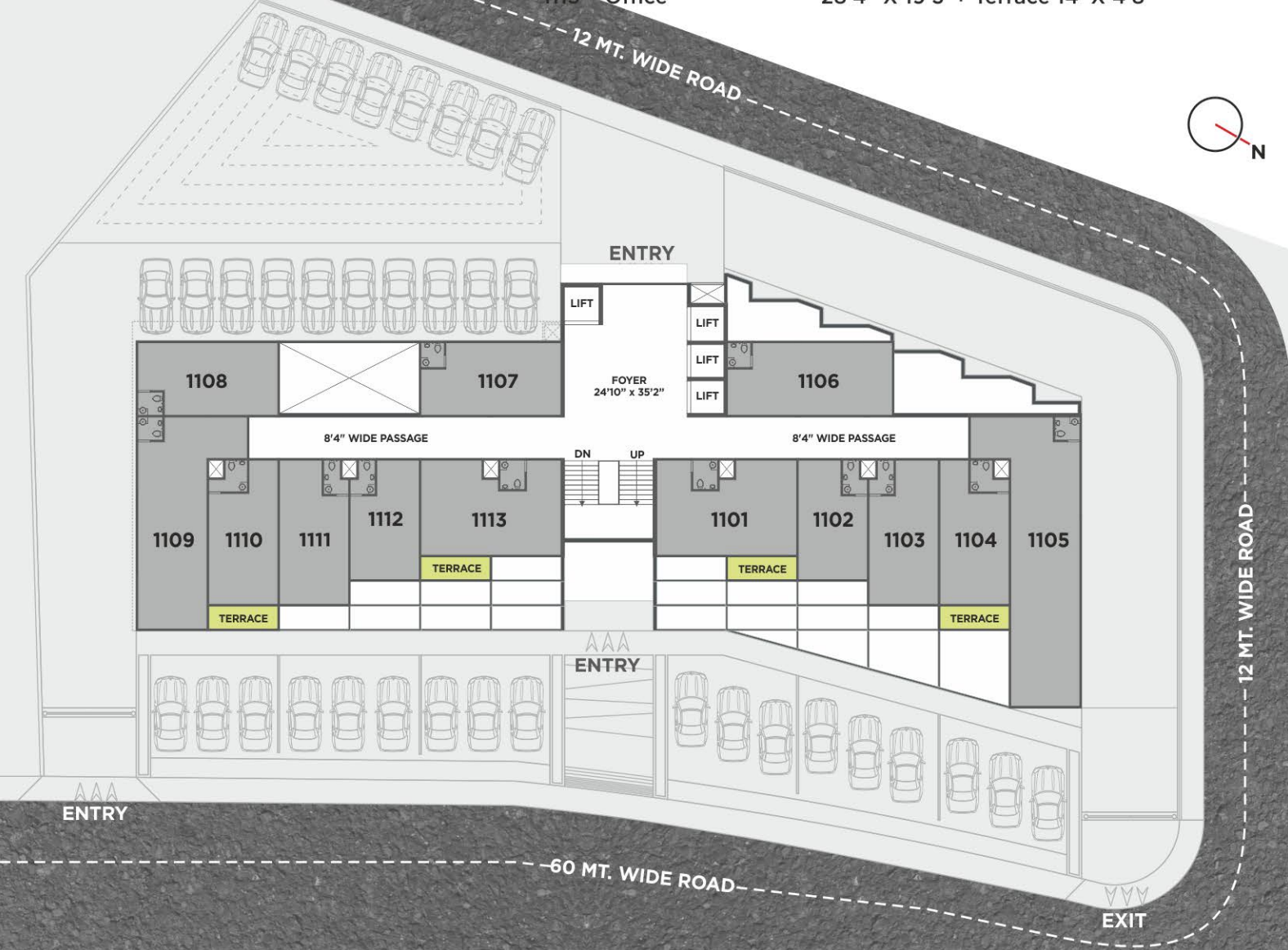
10TH FLOOR PLAN

- 1001 Office 28'4" X 24'2"
- 1002 Office 28'4" X 24'2"+ Terrace 14' X 4'8"
- 1003 Office 14'0" X 29'2"
- 1004 Office 14'0" X 34'2"
- 1005 Office 14'0" X 58'7"
- 1006 Office 33'4" X 14'8"
- 1007 & 1008 Office 28'4" X 14'8"
- 1009 Office 14'0" X 42'11"
- 1010 Office 14'0" X 34'2"
- 1011 Office 14'0" X 29'2"
- 1012 Office 28'4" X 24'2"+ Terrace 14' X 4'8"
- 1013 Office 28'4" X 24'2"



11TH FLOOR PLAN

- 1101 Office 28'4" X 19'3"+ Terrace 14' X 4'8"
- 1102 Office 14'0" X 24'2"
- 1103 Office 14'0" X 29'2"
- 1104 Office 14'0" X 29'2"+ Terrace 14' X 4'8"
- 1105 Office 14'0" X 58'7"
- 1106 Office 33'4" X 14'8"
- 1107 & 1108 Office 28'4" X 14'8"
- 1109 Office 14'0" X 42'11"
- 1110 Office 14'0" X 29'2"+ Terrace 14' X 4'8"
- 1111 Office 14'0" X 29'2"
- 1112 Office 14'0" X 24'2"
- 1113 Office 28'4" X 19'3"+ Terrace 14' X 4'8"



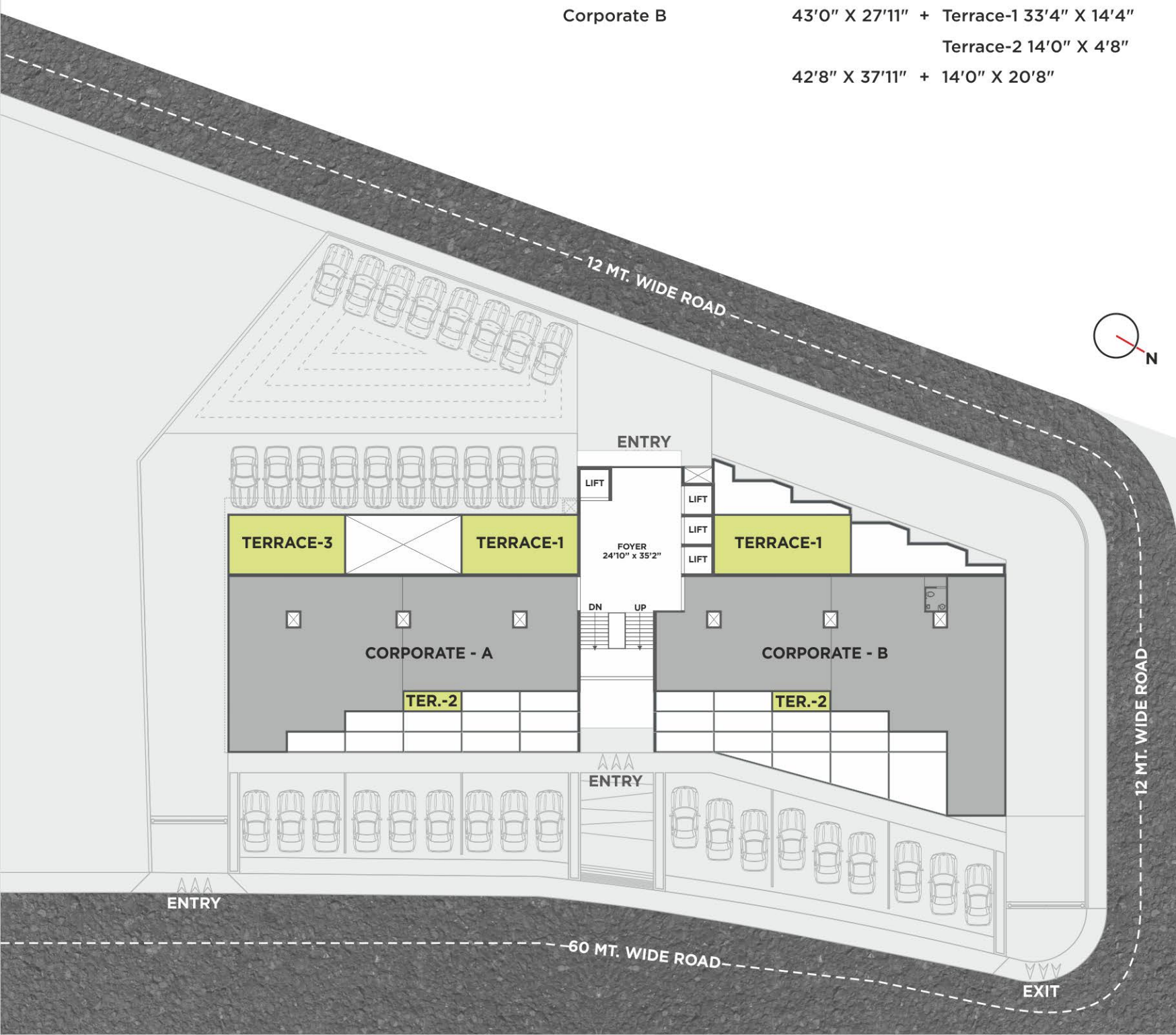
12^{GH} FLOOR PLAN

- 1201 Office 28'4" X 19'3"
- 1202 Office 28'4" X 24'2"+ Terrace 14' X 4'8"
- 1203 Office 28'4" X 37'11"+ 14'0" X 21'0"
- 1204 Office 33'4" X 14'8"
- 1205 Office 28'4" X 14'8"
- 1206 Office 28'4" X 58'0"
- 1207 Office 28'4" X 24'2"+ Terrace 14' X 4'8"
- 1208 Office 28'4" X 19'3"



13TH FLOOR PLAN

Corporate A	43'0" X 27'11" + Terrace-1 28'4" X 14'4" Terrace-2 14'0" X 4'8" 42'8" X 37'11" + Terrace-3 28'4" X 14'4"
Corporate B	43'0" X 27'11" + Terrace-1 33'4" X 14'4" Terrace-2 14'0" X 4'8" 42'8" X 37'11" + 14'0" X 20'8"



SALIENT FEATURES



- ELEGANT APPEARANCE OF THE BUILDING
- WELL-PAVED MARGIN AREA
- AUTOMATED ELEVATORS OF INTERNATIONAL COMPANY
- 24 HOURS WATER SUPPLY
- TILES FLOORING-STANDARD VITRIFIED
- ELECTRIFICATION-ADEQUATE ELECTRIC POINTS INCLUDING TELEPHONE POINTS.

TERMS

- Reserved by the developers to make any changes in plan, elevations and other details which will be binding to all the members
- In order to maintain the aesthetics of the building at a very high level, installation of AC units will be permitted at the designated spots and nowhere else, changes which affect the elevation and structure system shall not be permitted for all times to come
- Encroachment, in any form, outside the defined units shall not be allowed
- Merchandise, articles, etc. cannot be stored / kept in common areas as defined by the project managers
- Only internal changes shall be made with prior permission and shall be charged extra in advance
- All dimensions shown in the plans are approximate, average, unfinished and subject to variations
- G.S.T. and any other taxes will be extra
- Changes in services of individual units will not be permissible
- Any external signages for offices shall not be permitted for all times to come
- Payment are to be made in favour of "SATYAMEV ELITE"

RERA NO.: PR/GJ/AHMEDABAD/AHMEDABAD CITY/AUDA/CAA03112/070718

